



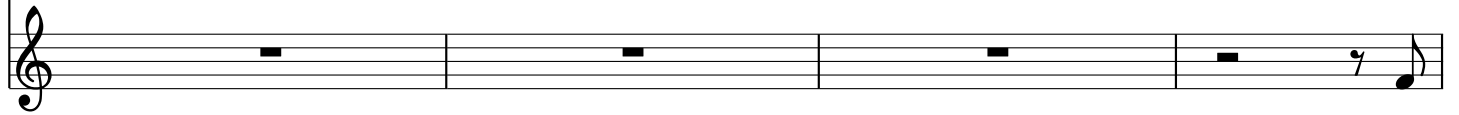
Wintergrace



1. This is the time so well we love, the time of all the year When



win - ter calls with chi - lling breath for fire - side and good cheer A



A



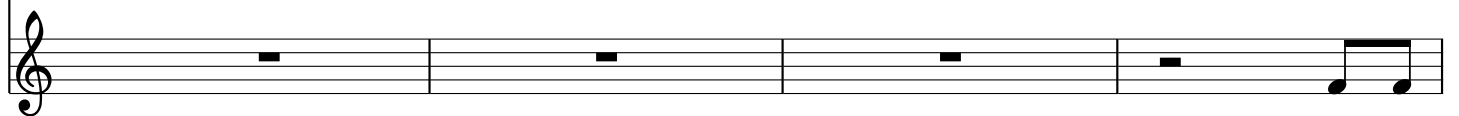
time for man and beast to stand and feel the sea - son turn To



time for man and beast to stand and feel the sea - son turn



Chorus:
watch the stars for se - cret signs and the land's true le - ssons learn. When the



When the

19

corn is all in - to the barn The old cow's breath a fros - ty wine

corn is all in - to the barn The old cow's breath a fros - ty wine

23

and the moon a - cross the fall - ow field doth sil - ver shine.

and the moon a - cross the fall - ow field doth sil - ver shine.

1. *This is the time so well we love, the time of all the year
 When winter calls with chilling breath for fireside and good cheer
 A time for man and beast to stand and feel the season turn
 To watch the stars for secret signs and the land's true lessons learn*

Chorus:

*When the corn is all into the barn
 The old cow's breath a frosty wine
 And the morn across the fallow field
 Doth silver shine*

2. *And when cold morning's radiant star shines over hill and plain,
 We know the sun will follow
 and the wheel shall turn again
 So now take stock of all you have each stored in its own place
 And take a pause and thankful be for winter's rest and grace.*

Chorus

